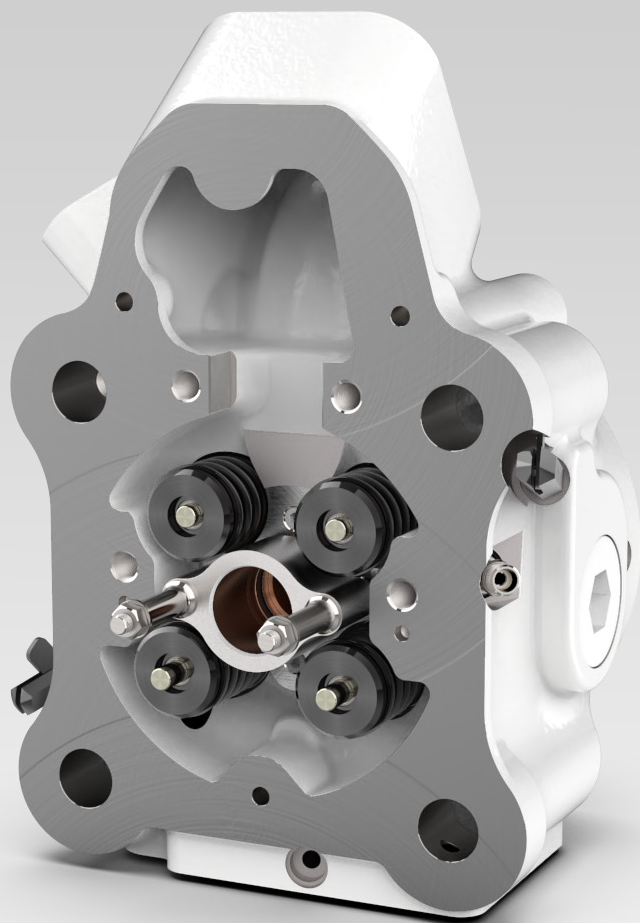


JENBACHER GAS ENGINES

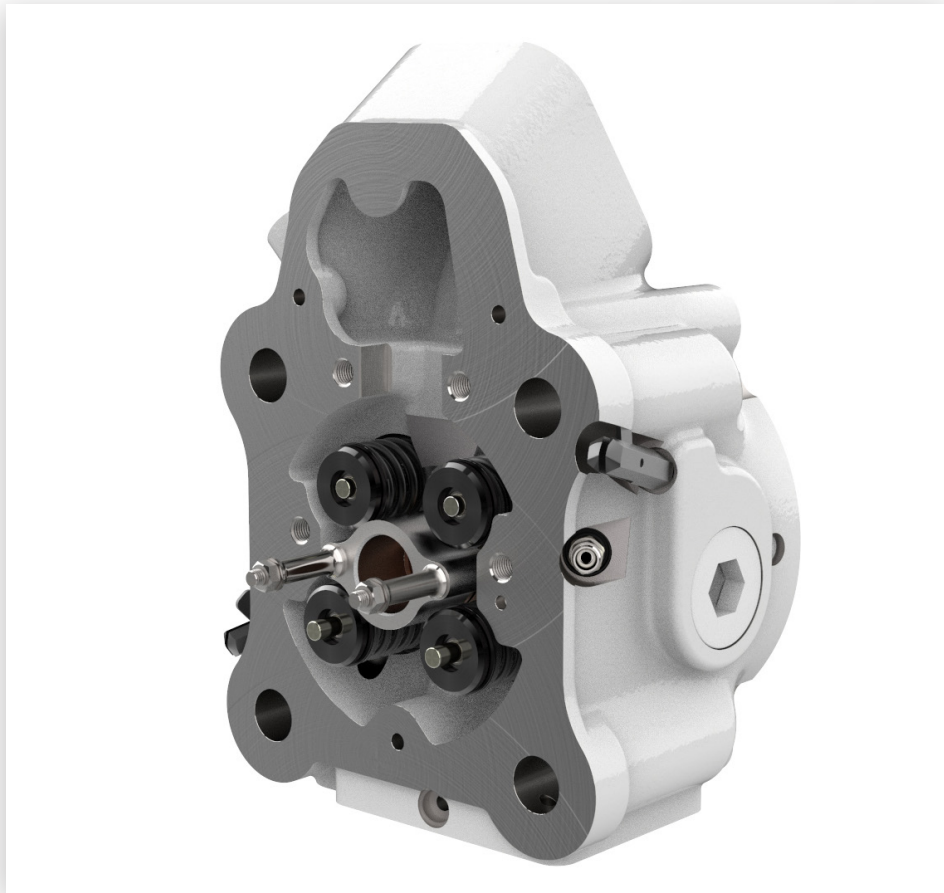
SERIES 6



Increase the reliability of your Jenbacher series 6 gas engine with our spare-parts. Our series 6 product-lines are thoroughly designed and enhanced, enable longer life-time, friendly maintenance and overall higher reliability and performance, thus ensuring highest efficiency. We are building on years of strong in-house research and development for our series 6 products and our experienced engineers are dedicated to continuously improve our benchmark-products.



Cylinder heads engine version E & F



Description

Cylinder heads belong to the critical core-components of any combustion engine and are extremely loaded. Therefore they have an enormous impact on engine reliability and performance. We have developed our PowerUP series 6 cylinder heads with an optimized cooling system, highest-quality valves and seat-rings and improved casting materials which result in increased reliability and trouble-free operation. Successfully in operation all across the world since 2014 our cylinder heads are available for Jenbacher series 6 engine-versions E & F.



Advantages

- Optimized water channel geometry for better cooling, avoids valve-sticking and fire deck cracking
- High-quality casting material and highest quality valves and seat-rings
- Optimized valve seat geometry to minimize valve-wear
- Improved cooling properties of our cylinder heads in combination with our pre-combustion system have a positive impact on spark plug life



Compatibility

- Compatible with series 6 engines versions E & F
- Mixable with OEM cylinder heads for highest flexibility
- All-purpose design ready for use with bio- and special gases by simply adapting the pre-combustion system

Spark plug series 6



Description

Our spark plug for series 6 with revolutionary annular electrode design for minimized wear and reliable, strong pre-combustion.

Our spark plugs for series 6 are subject to continuous improvement and rigorous testing on a vast variety of series 6 engines and applications to ensure our OEM-inspiring design stays the best and most commercially efficient in the market. The PowerUP series 6 spark plug requires no regapping and is therefore maintenance-free!

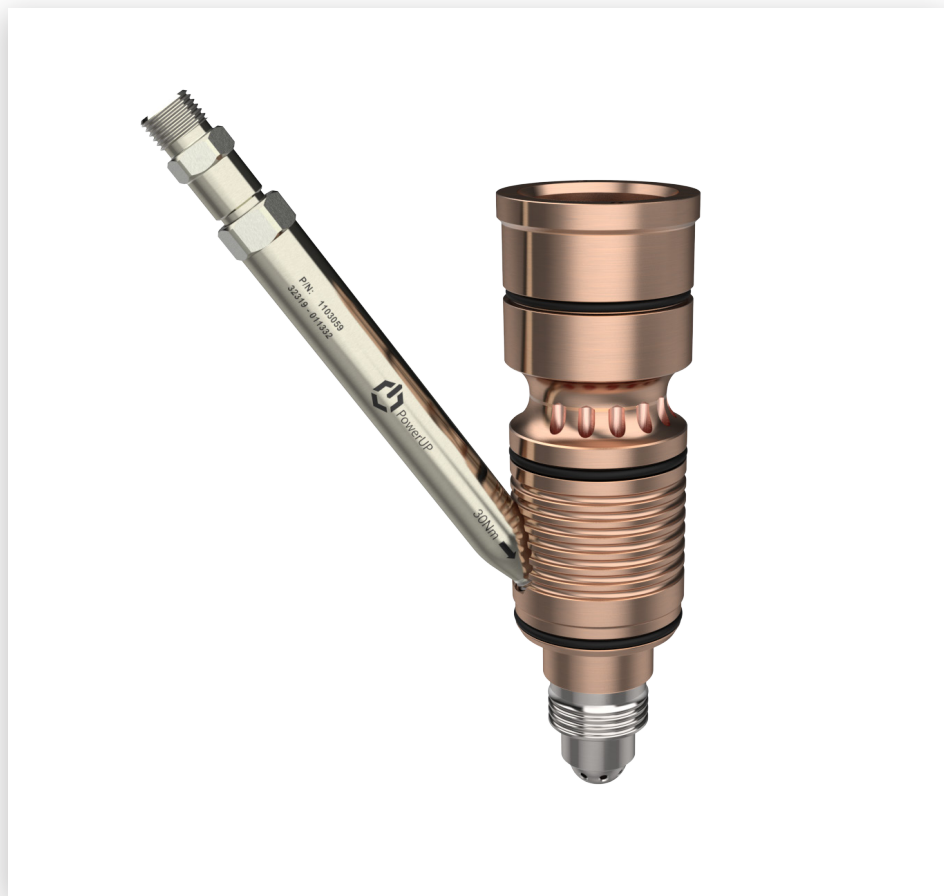
Advantages

- Maintenance-free due to annular electrode design
- Long lifetime

Compatibility

- Plug and play design for all series 6 engines, no adjustments necessary
- Available for Natural gas, Biogas, Landfill & Associated petroleum gas – special release available for other gas-types.

Pre-combustion system



Description

Our pre-combustion system consisting of pre-chamber, spark plug sleeve and pre-chamber gas valve works harmoniously together. Our engineers have continuously optimized the functional design and reliability of every single component, while at the same time the overall dimensions remain unchanged to ensure full compatibility with OEM parts.

Enabling a steady combustion with minimal wear the system is increasing the reliability of the entire gas engine and allows for a flawless operation. Available for natural gas, biogas, landfill gas and selected special gases.



Advantages

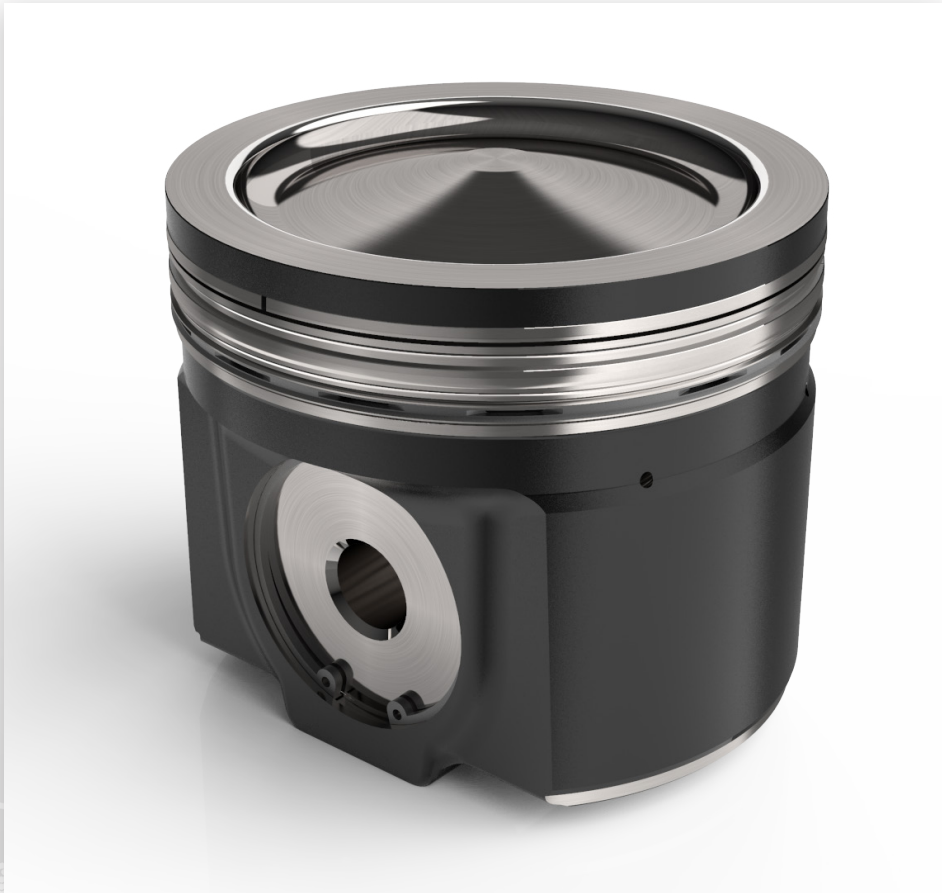
- Designed for longer lifetime & less soot production
- High quality materials to minimize wear & avoid cracks
- Optimized cooling properties aid in prolonging spark plug lifetime
- Improved O-rings to avoid leakages and unnecessary downtimes



Compatibility

- Compatible with all series 6 engine versions E&F cylinder heads
- “Drop in solution” – each single part is interchangeable / mixable with OEM

Steel piston series 6



Description

Our steel piston with “mexican-hat-shape” was specially developed to address existing reliability problems in the market and aims to allow for a flawless operation of series 6-F engines. With our revolutionary one-piece design, we have eliminated the risk of piston-crown separation.

Highest quality material and processing make the PowerUP steel-piston the spare-part of choice for your next series 6-F engine overhaul.

Reliability

- One-Piece-Design eliminates risk of piston-crown separation
- Increased top-land to reduce temperatures at the compression ring, minimizing oil coke deposits and thus avoiding cylinder-liner scuffing

Compatibility

- Available for all series 6 engine version F
- Available for compression ratios 10.5, 11.5 12.0 and 12.5

Maintenance parts



Description

We cover the complete range of products for preventive and corrective maintenance.

All the products for daily operation, such as filters and gaskets, as well as parts for minor and major overhaul, such as bearings, starters, liners, valves and actuators are selected and specified for highest quality.

Availability

- An inventory of 100 000 items and a warehouse of 500m³ enables us to provide you with all the necessary parts for daily operation
- Our sales team is dedicated to react fast for emergency delivery with most items on stock or to be sourced quickly from our well-connected global supply-chain

Exhaust gas line + insulation



Description

Exhaust gas lines and insulation are amongst the main cost drivers of overhauls if needed to be exchanged. Therefore it was a necessity for us to provide our customers with a commercially efficient and flexible solution for an exchange of the series 6 exhaust gas line or its sub-components.

We are also able to offer both types of insulation – hard & soft, based on our customer's needs and preferences.

Advantages

- Available for all series 6 engines and cylinder-counts
- Sections mixable with OEM line for full flexibility
- Cost-effective solution for safe engine operation after overhauls
- Soft & hard insulation available

Blowby-Filters



Description

Our blow-by filtration system significantly reduces the contamination of turbochargers, intercoolers and combustion chambers, thus extending the lifetime and performance of the entire gas engine.

Therefore the overall reliability of the power plant increases and on top of that our blow-by filtration system comes with a much higher expected lifetime than OEM setups.



Reliability

- Expected lifetime of up to 30.000 operating hours
- Guaranteed oil separation rate of 99,98%
- No thermal insulation required
- Easy to assemble and maintenance free
- Compact design that comes with specially designed vibration decoupling to increase reliability
- High specific oil load capability eliminates the need for a multi-filter setup like seen with OEM filters



Compatibility

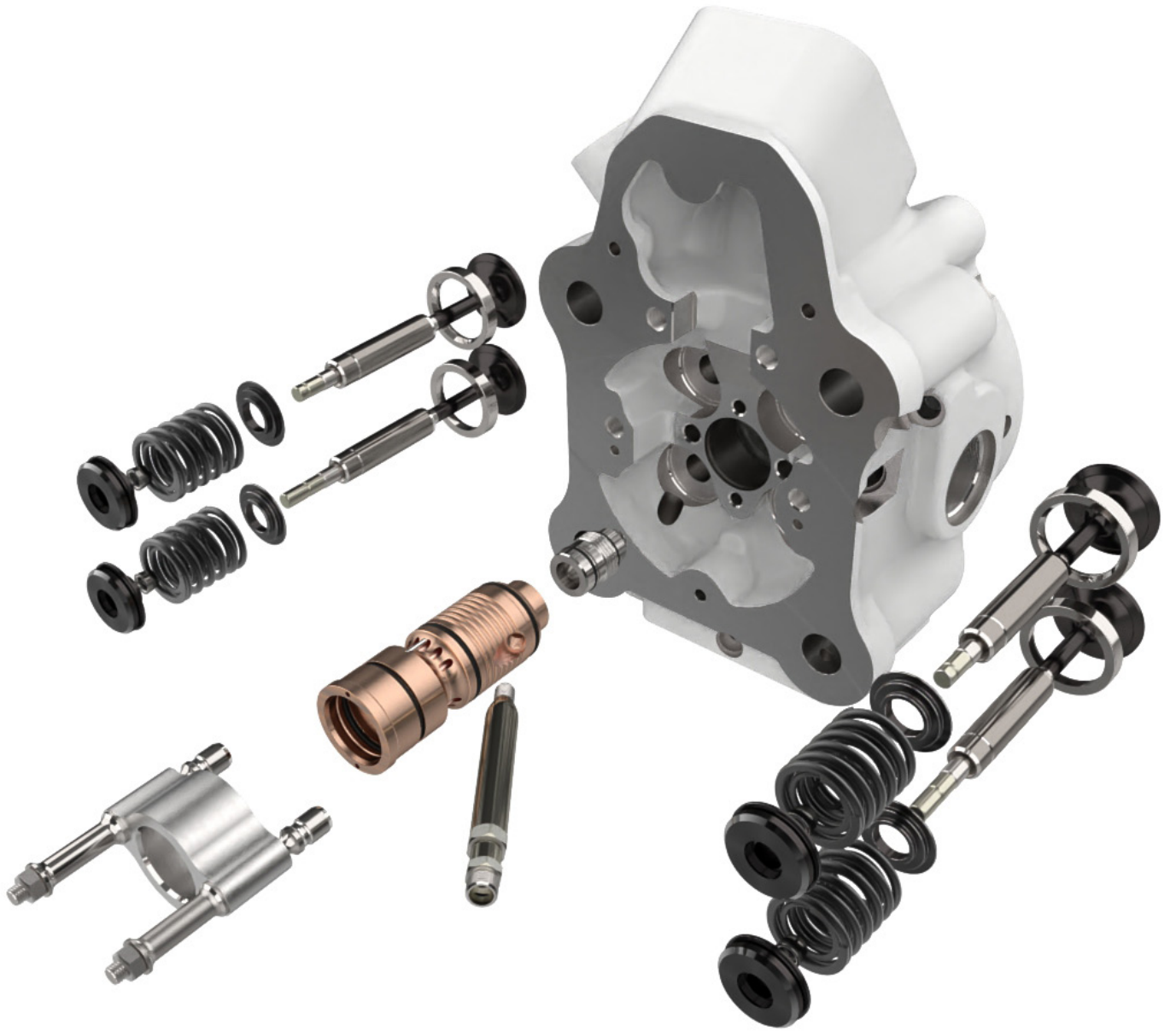
- Plug and play design for easy, direct exchanges of the filter-unit on most series 6 engines
- Retrofitting kits for special versions ensure compatibility with all series 6 engines

Long-term Supply Agreements (LTSA)

We offer Long-Term Supply Agreements (LTSA) that provide the most flexibility through a strategic combination of parts, repair and field service at discounted, fixed cost for the contract period. With our (LTSA) you will have preferential access to PowerUP parts inventory, field service resources and engineering expertise.

- Define „List of Parts “(LOP)
- Based on LOP the yearly parts requirement/order volume (sales target) is assumed
- Depending on order volume special LTSA discounts are granted
- End of each year the payments received are reviewed, LTSA discount (credit note) issued
- This LTSA discount will be set off against future LTSA orders

PowerUP Long-Term Supply Agreement (LTSA)	Standard Service Contract based on operating hours
Invoicing is done at order placement. NO pre-financing cost.	Invoicing is done per operating hour which is in fact a kind of pre-financing. Customer pays from first operating hour already partly the big and cost intense bigger maintenance works (e.g. minor overhaul).
Flexible scope of supply. Parts can be added or taken out of the LTSA at any time with minor/no impact.	Fixed scope of supply. No change of scope is possible as any part which is taken out has already been partly pre-paid (invoicing per OPH). This pre-payment is lost.
LTSA can be easily adapted to new technologies enabling e.g. longer part life times.	Very difficult for the same reason as above mentioned (invoicing per operating hour).
No exclusivity.	Strict exclusivity, even on parts where better prices/technologies are available in the market.





About us

PowerUP is an energy engineering company that specialises in high-tech products and solutions for gas engines. With customers in over 40 countries in the world, we are constantly developing cutting edge technology and solutions for the energy industry.



PowerUP GmbH
Sportplatzweg 2
6135 Stans, Tirol
Austria



+43 5242 64 666 - 0



office@powerup.at



www.powerup.at

A large, light blue world map is centered in the background, overlaid with a white hexagonal grid pattern. The map shows the continents of North America, South America, Europe, and Africa.

Driven by efficiency